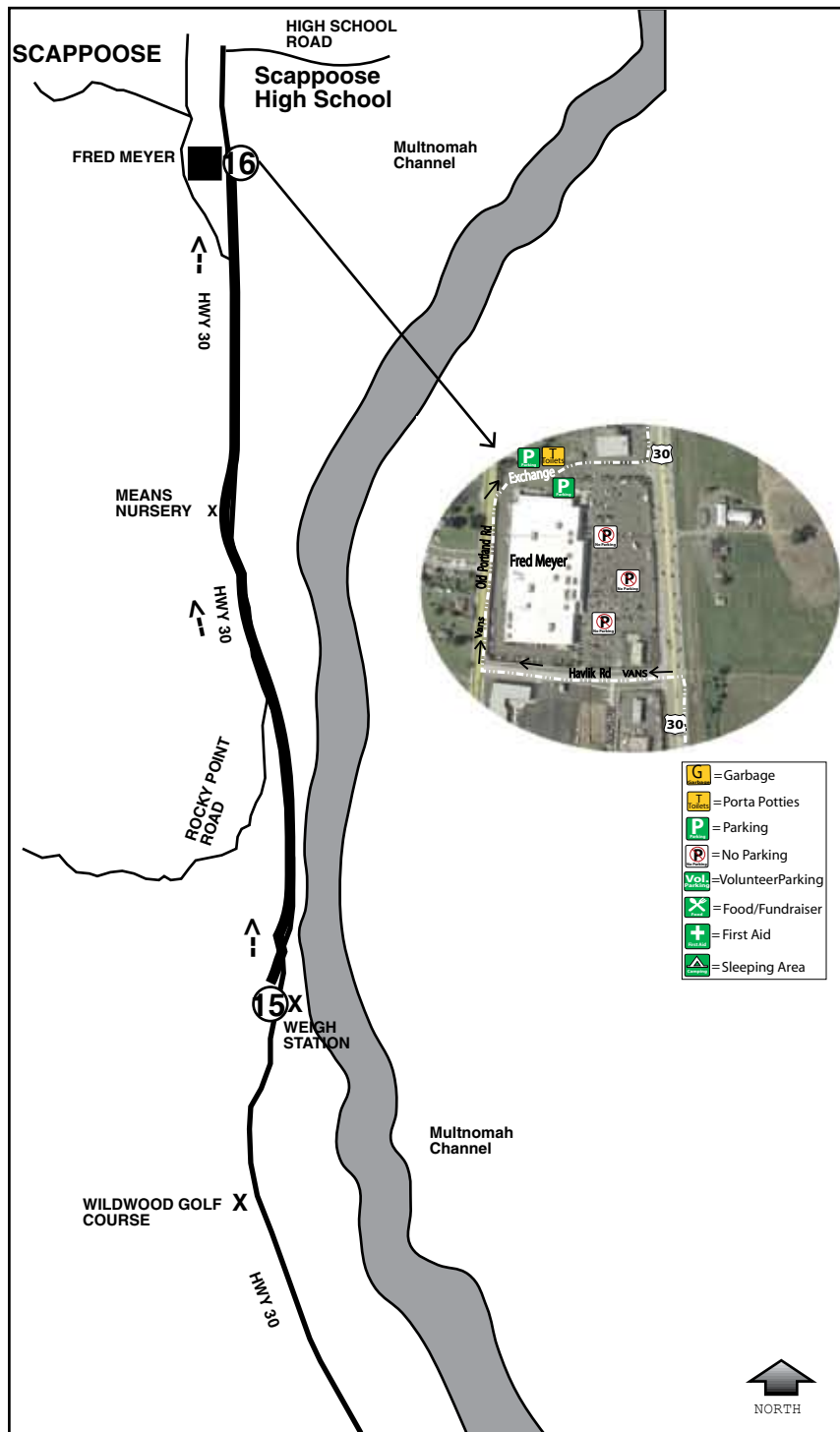
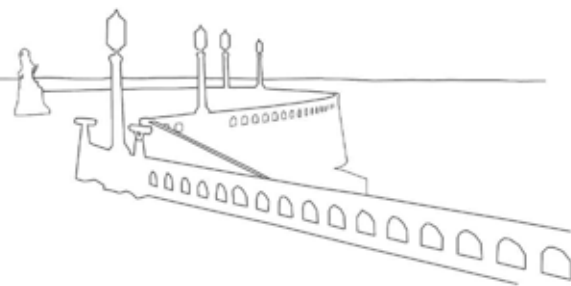


LEG 16

3.52 Mi. - Easy



LEG DESCRIPTION:

Gently rolling terrain on paved shoulder along Highway 30.

EXCH. ADDRESS:

51500 Columbia River Hwy
Scappoose, OR 97056

LEG NOTES:

Van parking at Creekside Baptist Church and far rear side of Fred Meyer parking lot.

Last stop for gas and provisions at Fred Meyer Exchange (Havlik Rd/HWY 30).

RUNNERS TO RUN ALONG RIGHT SIDE OF HWY 30 WITH THE VAN TRAFFIC (not facing traffic) UP TO SIGNAL LIGHT AT 3.22 MILE

VANS SHOULD NOT STOP ON SHOULDER OF HWY 30!

RECYCLING EXCHANGE! (provided thanks to Fred Meyer).

LEG LEGEND:

- 0.00 Exchange #15 / Weigh Station
- ↑ 0.84 Rocky Point Road / HWY #30
- ↑ 1.77 Means Nursery
- ← 3.22 Havlik Road (cross HWY 30 to sidewalk at signal light)
- ← 3.29 Fred Meyer
- 3.52 Exchange #16 @ Fred Meyer near Salvation Army sheds / HWY 30

