

VAN 2&1

MAJOR VAN EXCHANGE 4.87 MI | EASY

NAMED AFTER: KATHY K.

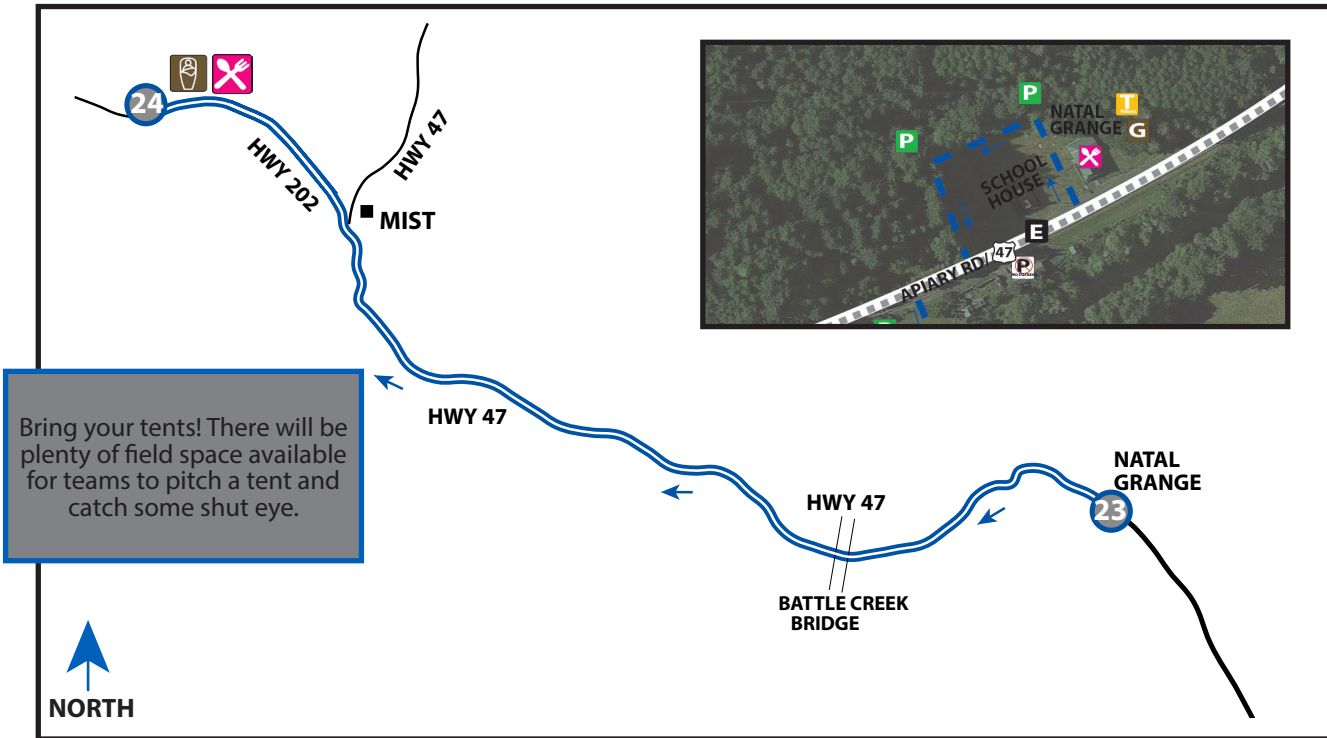


LEG DESCRIPTION: Flat terrain along Nehalem River and through pastoral setting on HWY 47 and HWY 202.

EXCH 24 ADDRESS: 13950 HWY 202 Birkenfeld, OR 97016 m.p. 44.9

GPS: 46.002792, -123.278399

NOTES: Cell phone coverage unreliable until after Leg 32.



DIRECTIONS FROM EXCH 23 TO EXCH 24

- 0.00 Exchange 23 (Natal Grange)
- ↑ 0.83 Country Museum on left
- ↑ 1.15 Battle Creek Bridge
- ↑ 3.55 Nehalem Valley Automotive
- ↑ 3.66 Continue on HWY 202
- 4.87 Exchange 24 (Mist - HWY 202)

EXCHANGE NOTES

Parking: In two large fields along right side of the road.

Do not drop runner off near exchange (causes immediate back-up).

Exchange 24 sleeping only permitted in designated, roped off sleeping areas. Tents ARE allowed at Exchange 24. **Race DQ if found sleeping on ground next to vehicle!**

Provisions: Course Fundraiser

Fuel: No (nearest fuel - 13.2 miles north on HWY 30)

COURSE FUNDRAISER
VERNONIA HS EQUESTRIAN
 FRIDAY 4:00PM - SATURDAY 9:00AM
 FOOD: Hamburgers, cheeseburgers, vegetarian chili, biscuits/gravy, bagels & cream cheese, muffins, assorted snacks.
 BEVERAGES: Coffee, soft drinks, water



Highly encouraged to wear high visibility clothing (no dark colors), and for non-participating teammates outside van to wear a reflective vest & LED flasher (6pm-9am).

