

# THE ST. MARK'S STRAITAWAY

## 6.41 MI | EASY

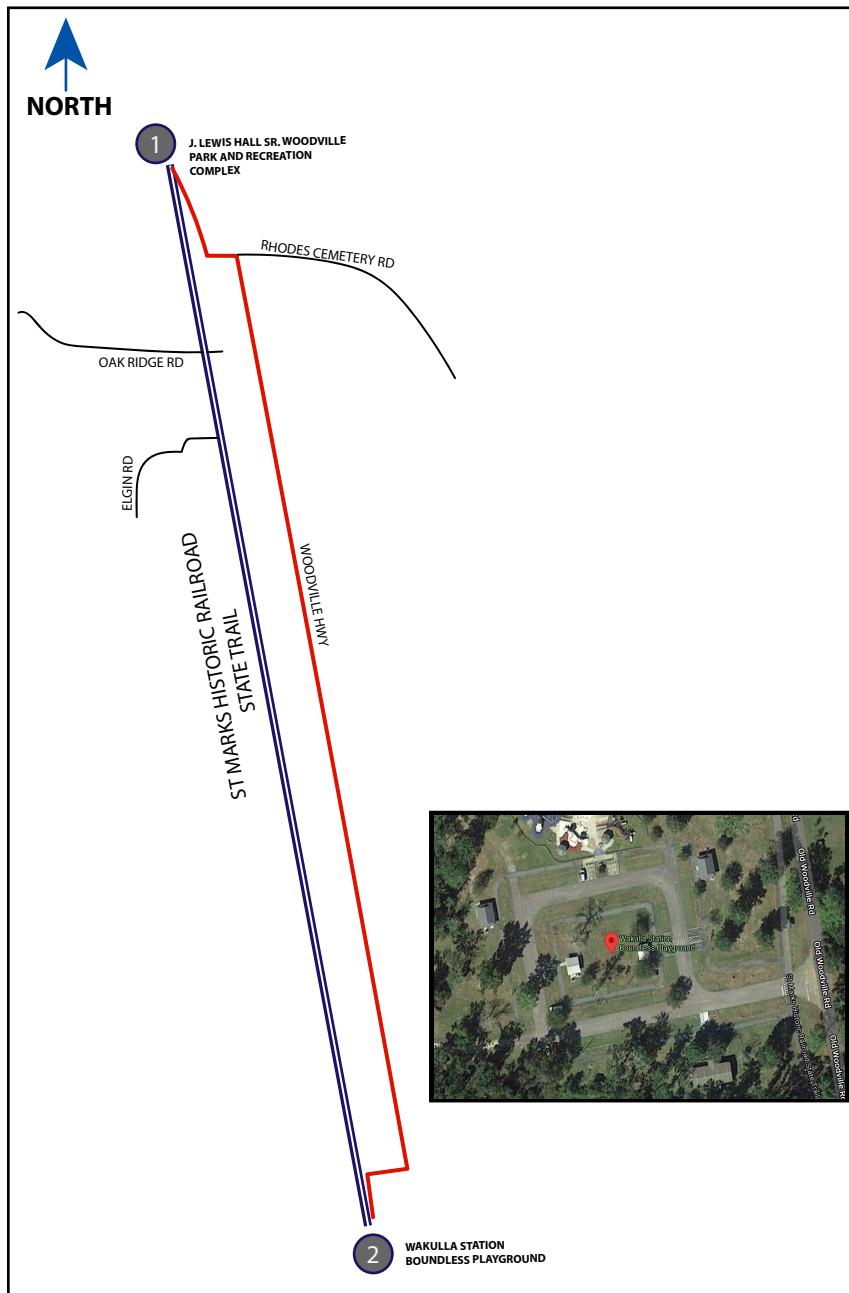


**LEG DESCRIPTION:** This leg is a fairly flat and straight run on the St. Marks Historic Railroad State Trail

**EXCH 2 ADDRESS:** Walluka Station Trailhead Park, 1362 Woodville Hwy, Crawfordville, FL 32327

**GPS:** 30.245101, -84.235799

**NOTES:** We custom-built this leg specifically for the more 'navigationally-challenged' member of your team. This straight but by no means narrow, Moderate difficulty leg crosses the Leon/Wakulla county border and follows a historic 12' wide railroad-turned-blacktop trail 6.4 miles south to Exchange Point 2 – Wakulla Station Trailhead and playground. The leg transitions runners from urban to increasingly rural landscapes and showcases this region's native woodlands and friendly, laid-back atmosphere while offering a heart-warming, -17-foot elevation loss. If fast is your thing, or if navigation isn't, this is your leg



### DIRECTIONS FROM EXCHANGE 1 TO EXCHANGE 2

6.41 Arrive at Exchange 2, Wakulla Station Boundless Playground

### VAN DIRECTIONS FROM EXCHANGE 1 TO EXCHANGE 2

- 0.10 Turn RIGHT onto Old Woodville Rd
- ← 0.50 Turn LEFT onto Lutterloh Rd
- 0.50 Turn RIGHT onto Woodville Hwy
- 6.30 Turn RIGHT onto Cumberland Trce
- ← 6.40 Turn LEFT onto Old Woodville Rd
- 6.60 Arrive at exchange 2

Runner Directions

Van Directions

### EXCHANGE NOTES

Large County Park with restrooms, picnic tables, playgrounds and ample, paved parking for vehicles. Convenience stores available within 2 miles of park.

