

# VAN 1

# 5.32 MI | MODERATE

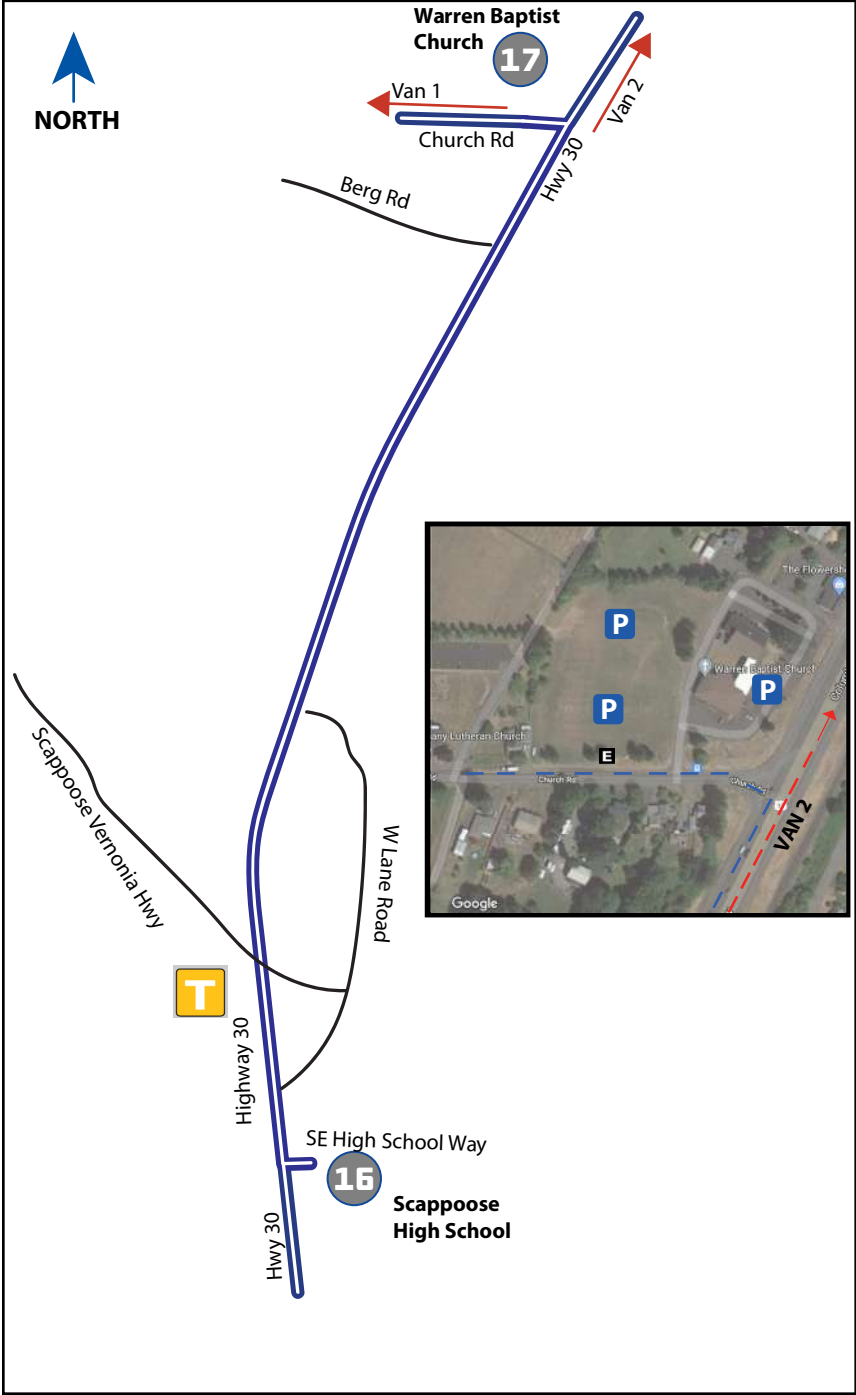


**LEG DESCRIPTION:** Basically flat terrain on paved shoulder along HWY 30.

**EXCH 17 ADDRESS:** Warren Baptist Church, 56799 Columbia River Hwy, Warren, OR 97053

**GPS:** 45°49'8.99"N, 122°51'2.81"W

**NOTES:**



### PARTICIPANT AND VAN 1 DIRECTIONS FROM EXCH 16 TO EXCH 17

- 0.00 Exchange 16 (Scappoose High School)
- ↑ 0.10 High School Way
- 0.12 Turn RIGHT onto HWY 30 (Participants cross to other side of Hwy 30 with crosswalk and guidance from flaggers only)
- ← 5.23 Turn LEFT onto Church Rd
- 5.32 Exchange 17 (Warren Baptist Church)

### EXCHANGE NOTES

Provisions: Yes, in town of St. Helens  
 Fuel: Yes (Fuel up!)



It is recommended to fuel up your van on this leg as there are no gas stations on the route until Seaside. (Gas also available 9 miles off of race route in Astoria)



Highly encouraged to wear high visibility clothing (no dark colors), and form on-participating teammates outside van to wear a reflective vest & LED flasher (6pm-9am).

